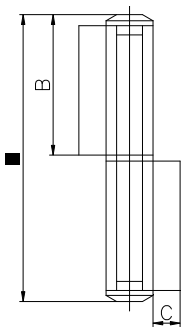




Панта Estebro® за заваряване кръгла двукрила 20x140x3 мм, 607P



Cod	Dimens.	A	B	C	ØD	E		
604P	18x100x3 Izda	104	51	17	18	3	12	3,00
	Esquerda-Left-Gauche							
605P	18x100x3 Dcha	104	51	17	18	3	12	3,00
	Direita-Right-Droite							
606P	20x140x3 Izda	140	69	35	20	3	6	2,70
	Esquerda-Left-Gauche							
607P	20x140x3 Dcha	140	69	35	20	3	6	2,70
	Direita-Right-Droite							

Family: Flag hinge

Material: Flags: stainless steel AISI 304L

Axle, washer and end caps: stainless steel AISI 303

Finish: Polished

Maximum weight supported: According to study

Description: Component which, installed on a metallic swing door to allows its opening and closing. It has a fixed cap on each end which blocks the axle and prevents it from rusting. For the installation, the lower part is welded to the frame that is why it is necessary to design with different hands (right/left) depending on the direction turn of the door.

Продукт: [Панта Estebro® за заваряване кръгла двукрила 20x140x3 мм, 607P](#)

Категория: [Панти за заваряване](#)

Бранд: [Estebro®](#)

Категория бранд: [Панта Estebro®](#)